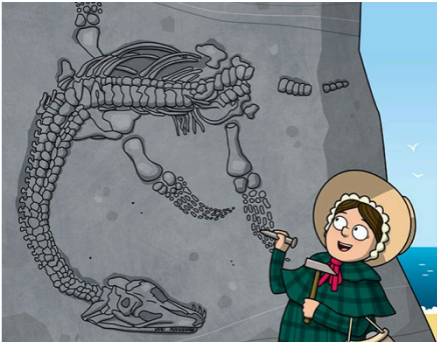
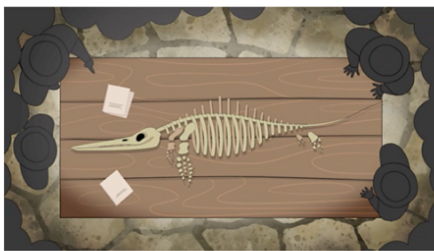


# Conkers Class (KS1) Homework Activities (Autumn 1) Evolution



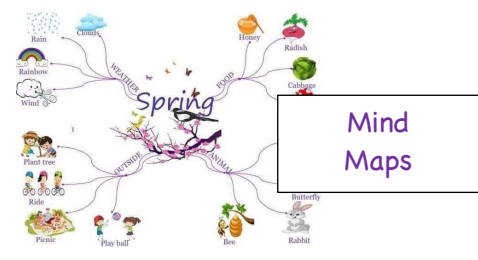
Select from the following learning activities based upon Mary Anning. Use your History Knowledge Organiser to support you with these tasks:

- Use the 'Mary's Famous Fossil Finds' section of your knowledge organiser to make a timeline of the amazing fossils that she discovered.
- Create a poster that details why Mary Anning is known as a significant individual who is remembered and admired today.
- Use a dictionary/online dictionary to write a definition for each of the 'key vocabulary' words that feature on your knowledge organiser.



Select from the following learning activities based upon Seasonal changes. Use your Science Knowledge Organiser to support you with these tasks:

- Create a 'mind map' (as featured in the images here) about the four seasons and seasonal changes. Remember to use the facts featured in your knowledge organiser.



Mind Maps

Mind Maps



Picture Dictionary

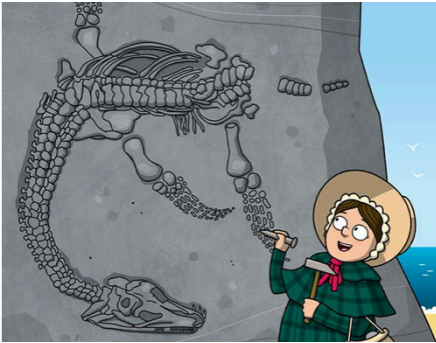
- Make a picture dictionary for each season (like the examples shown here). Alternatively, you could make one for the 'key vocabulary' sections on the knowledge organiser.
- Design a quiz featuring the key facts and information on your knowledge organiser.



Picture Dictionary

Please bring your homework into class to share with us during the week commencing 17<sup>th</sup> October - we look forward to seeing it!

## Conkers Class (Reception) Homework Activities (Autumn 1) Evolution



Select from the following learning activities based upon Mary Anning. Use your History Knowledge Organiser to support you with these tasks:

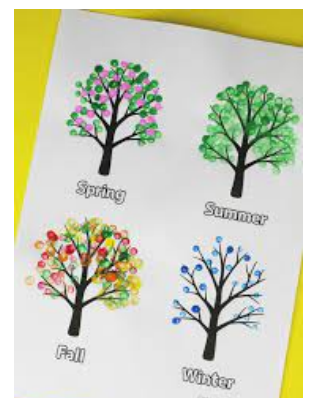
- Draw a picture of Mary Anning and use your knowledge organiser to write some accompanying facts about her.
- Draw some of the fossils that Mary found and label these.



Select from the following learning activities based upon weather. Use your Science Knowledge Organiser to support you with these tasks:



- Draw and label pictures to show how we need to dress for different types of weather.
- Use your knowledge organiser to discover which season your birthday falls in. Which seasons are your friends and relatives' birthdays in? Make a list of this information.
- Make a picture/collage to show each the four seasons.



Please bring your homework into class to share with us during the week commencing 17<sup>th</sup> October – we look forward to seeing it!