

KS1 Science Knowledge Organiser - Seasonal Changes

Seasons	In places like the UK, there are four seasons each year, autumn, winter, spring and summer .
Spring	In spring , the weather starts to get warmer. The leaves begin to grow on the trees and some trees may blossom (have flowers). Plants begin to grow and you may see baby animals like lambs around. The daytimes start to get longer.
Summer	In summer , the weather gets hotter. The daytime is long and the nights are short. Summer has the longest days of sunlight. The trees are full of leaves and there are lots of flowers, bees, butterflies and other insects.
Autumn	In autumn , the weather begins to get colder. The leaves start to fall from the trees. The amount of daylight becomes less. This means the daytimes are shorter and the night times are longer.
Winter	In winter , the weather is much colder. Sometimes it is cold enough to freeze, leaving frost and ice on the ground. It sometimes snows. Many trees have bare branches as all their leaves have fallen off. The daytimes are the shortest in the year and the night times are the longest.
Weather	The weather includes the temperature outside, the wind direction and strength, as well as rain, cloud, snow and sun.
Daylight	Daylight is when it is light outside. The amount of daylight changes with each season .
Observations	What you notice when you look carefully at something.
Record	Keep information about something that has happened, e.g. in writing or pictures .
climate	The usual weather conditions of an area.
Equator	An imaginary line drawn around the middle of Earth, dividing it into the Northern and Southern Hemispheres .

Seasons and Months



Seasonal Changes

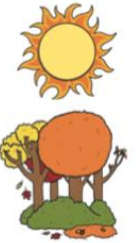


There are changes in weather in each **season**. In spring, it is often rainy and the **temperature** begins to get warmer.

In summer, the sun is much stronger. The **temperature** is warmer than in any other **season**.

In the autumn, the weather turns chillier, windier and there is often rain.

In the winter, it is often cold and frosty. It has to be freezing cold to snow.

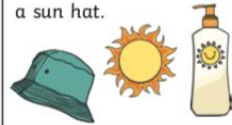


How the Weather Affects Us

The weather **affects** what we do and what we wear. If it is rainy, we wear **waterproof** clothes when we go outside.



If it is hot, we need to wear sun cream and a sun hat.



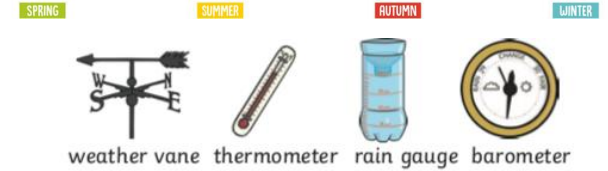
What causes the seasons?

- *The seasons are related to the way sunlight falls on different parts of Earth in the course of a year.
- *For about 6 months of every year, the North Pole is tilted toward the sun. During this time the Northern Hemisphere gets more direct sunlight (and more hours of daylight) than the Southern Hemisphere.
- *During the other 6 months, the North Pole is tilted away from the sun. The Southern Hemisphere then gets more direct sunlight and more hours of daylight.

northern hemisphere tilted away from the sun



northern hemisphere tilted towards the sun



Trees in autumn and winter

In the autumn, many trees will have their leaves turn brown, red, or orange. What you see is the leaves' natural colour before they drop off because of not getting enough food.

During winter, many of these trees will only show a trunk and branches. It can give you a good view of any bird's nests that would have been hidden during other months of the year.

Daylight hours each month:

Month	Sept	Oct	Nov	Dec	Jan	Feb	Mar	Apr	May	June	July	Aug
Hours of Daylight	13	11	9	8	8	10	12	14	15	16	16	14

Reception Science Knowledge Organiser- Seasonal Changes in Weather

Seasonal Changes



There are changes in weather in each **season**. In spring, it is often rainy and the **temperature** begins to get warmer.

In summer, the sun is much stronger. The **temperature** is warmer than in any other **season**.



In the autumn, the weather turns chillier, windier and there is often rain.



In the winter, it is often cold and frosty. It has to be freezing cold to snow.

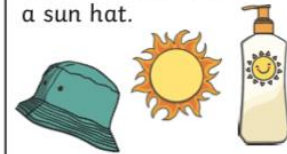


How the Weather Affects Us

The weather **affects** what we do and what we wear. If it is rainy, we wear **waterproof** clothes when we go outside.



If it is hot, we need to wear sun cream and a sun hat.



Key Vocabulary

seasons	The year is divided into four seasons : spring, summer, autumn and winter.
observations	What you notice when you look carefully at something.
record	Keep information about something that has happened, e.g. in writing or pictures.
temperature	A measure of how hot or cold something is.
thermometer	An instrument used to measure temperature .

Seasons and Months

<h3>Spring</h3> <p>March April May</p>	<h3>Summer</h3> <p>June July August</p>
<h3>Autumn</h3> <p>September October November</p>	<h3>Winter</h3> <p>December January February</p>

What to wear in the winter months

We need to wear the correct clothes in different seasons. It depends on the temperature! In winter, you usually need to wear a coat, hat, gloves, scarf and warm socks and boots.

Our Weather

In a weather forecast, **symbols** are used to show what the weather will be like in a particular area. People check the weather forecast before they make plans for a day out. Computers are used to help make accurate weather forecasts.



Weather around the World

In some places around the world, the weather can be **extreme** and this can be dangerous.

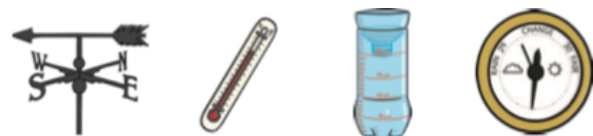


Trees in autumn and winter

In the autumn, many trees will have their leaves turn brown, red, or orange. What you see is the leaves' natural colour before they drop off because of not getting enough food.

During winter, many of these trees will only show a trunk and branches. It can give you a good view of any bird's nests that would have been hidden during other months of the year.

Different instruments can be used to measure and **record** the weather.



weather vane thermometer rain gauge barometer

SPRING

SUMMER

AUTUMN

WINTER

