

Knowledge Organiser: Music.

Summer 1 Fallen Fields

KS2



C-Jam Blues

(Duke's Place)

Bill Katts, Bob Thiele and Ruth Roberts

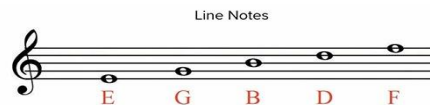
Duke Ellington

♩ = 144
C7

Ba-by! Take me down to DUKE'S PLACE.
Sax-es do their tricks in DUKE'S PLACE.

5 **F7** **C7**
Wild-est box in town is DUKE'S PLACE.
Fel-las swing their chicks in DUKE'S PLACE.

9 **D-7** **G7** **C7**
After last solo D.C. al Coda
To ⊕



Every Green Bus Drives Fast

12-bar blues chords in C

C ///	C ///	C ///	C ///
F ///	F ///	C ///	C ///
G ///	F ///	C ///	C ///

12-Bar Blues Progression

I ///	I ///	I ///	I ///
IV ///	IV ///	I ///	I ///
V ///	IV ///	I ///	I ///

Chords and Roman numerals

1. Whatever key you are in, count that as '1' (i.e. in C major, 1 is C)
2. From there, count up to 4 and 5 to work out what chords are IV and V (in C, IV is F and V is G)

Improvisation – Improvisation is where music is performed 'on the spot'. Music that is improvised isn't traditionally written down, and the performers will use their musical knowledge to perform something from scratch. In Blues music, the improvisation is usually the notes from the Blues scale.

Radio



During wartime, entertainment was important for maintaining **morale**. Many people listened to music on the radio.

The BBC began broadcasting 'Music While You Work'. The idea was to play non-stop music to help workers become more productive and keep spirits high.

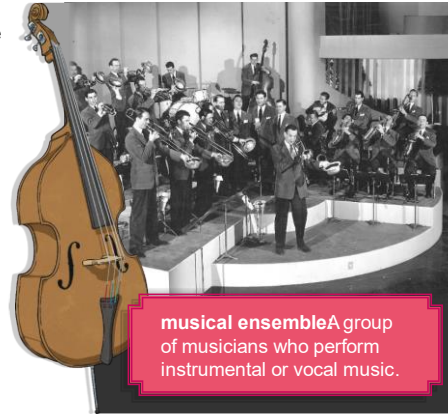
Did You Know...?
At this time, a radio was called a wireless.

morale: The confidence and enthusiasm of a person or group at a particular time.

Big Band Music

Big band music became popular in the 1940s. It was music that you could easily dance to and involved a big band and a bandleader.

Bandleaders led **musical ensembles** with at least ten members. There were saxophones, trumpets, trombones and other instruments, such as the piano, double bass, drums and guitar.



musical ensemble A group of musicians who perform instrumental or vocal music.

Big Band Singers

Big bands could have male or female singers. Many of the famous artists of the day performed with these bands, such as Bob Eberly and Ella Fitzgerald.

Unfortunately, during The Second World War, many clubs decided to hire smaller bands because they were cheaper which led to many big bands finishing during the 1940s.



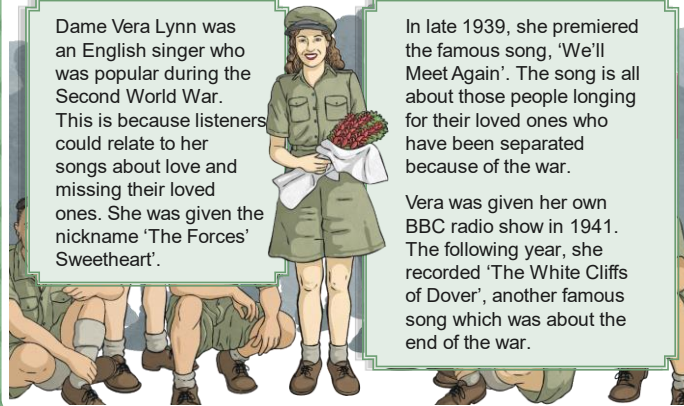
Ella Fitzgerald



Bob Eberly

Dame Vera Lynn

Dame Vera Lynn was an English singer who was popular during the Second World War. This is because listeners could relate to her songs about love and missing their loved ones. She was given the nickname 'The Forces' Sweetheart'.



In late 1939, she premiered the famous song, 'We'll Meet Again'. The song is all about those people longing for their loved ones who have been separated because of the war.

Vera was given her own BBC radio show in 1941. The following year, she recorded 'The White Cliffs of Dover', another famous song which was about the end of the war.